

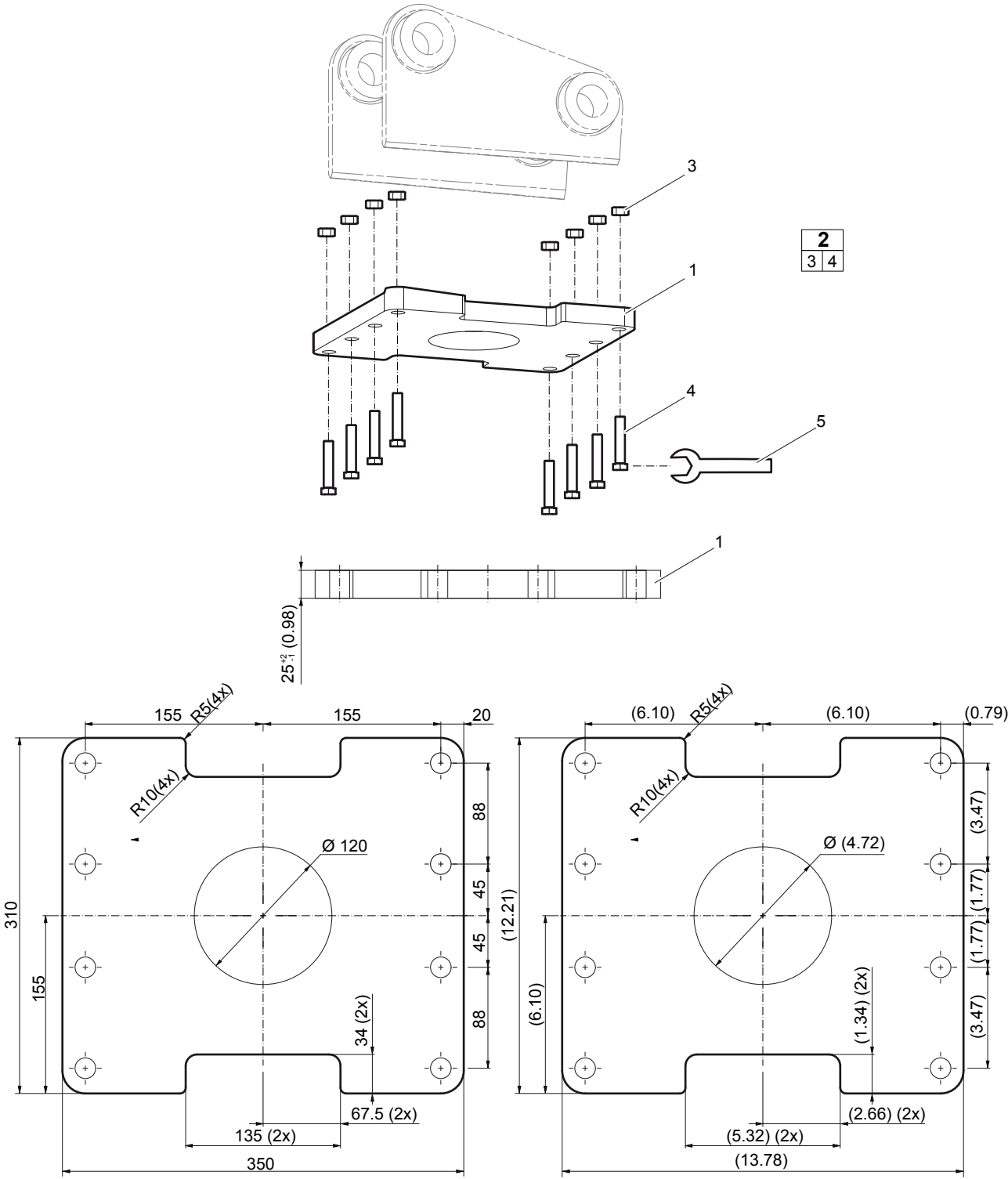
Base plate

Hydraulic attachments



Base plate

mm (in.)



No.	Description	Remark	Quantity	Part number
1	Base plate	material: EN10025-S355 J2G3	1	3315 2951 00
2(3-4)	Bolt kit		1	3315 2964 90
3	Hexagon, nuts		8	0266 2114 00
4	Hexagon, screws		8	3315 2995 00
5	Open end spanner	24/27 mm, optional accessory	1	3360 4306 55

Note: In order to attach the hydraulic attachments (SB 202, HC 308, HC 350, HC 409, HC 450) to a carrier, you must first design and manufacture, or purchase from a third party, web plates for the adapter suitable for the carrier. You must weld such web plates onto the base plate of the adapter. None of the described products listed above include any such web plates. Atlas Copco Construction Tools does not design, manufacture or sell such web plates.

After you have designed and manufactured or purchased from a third party the web plates and welded such web plates onto the base plate, this base plate is suitable for the following hydraulic attachments:

- SB 202
- HC 308
- HC 350
- HC 409
- HC 450

You must use a qualified professional welding company to weld the web plates onto the base plate.

See the following information before you weld the web plates:

- The base plate is made of the material EN10025-S355 J2G3.

See the following information before you operate the machine:

- When the hydraulic attachment is operated, the adapter plate must not be stopped by the mechanical stops in either position.
- While dimensioning the adapter, please notice not only the weight of the hydraulic attachment, but also the digging and breakout force of the carrier, possible vibrations etc.
- The design of the construction must be state of the art.

